

Gallopier Offshore Wind Farm

Local Notice To Mariners

Issued by : Gallopier Marine Coordination Centre

Date of Issue: 24.05.18

NTM: GWF-O&M 03-2018

For general enquiries please contact via email:

srv_galmcc.service@innogy.com
www.gallopierwindfarm.com

For fisheries enquiries please contact via email:

jonathan@brownmay.com
courtney@brownmay.com



Please be advised that from approximately 05-05-2018 the survey vessel "Morven" will be surveying within the OWF, the Sunk TSS and along the 45km export cable where it makes landfall at Sizewell in Suffolk.

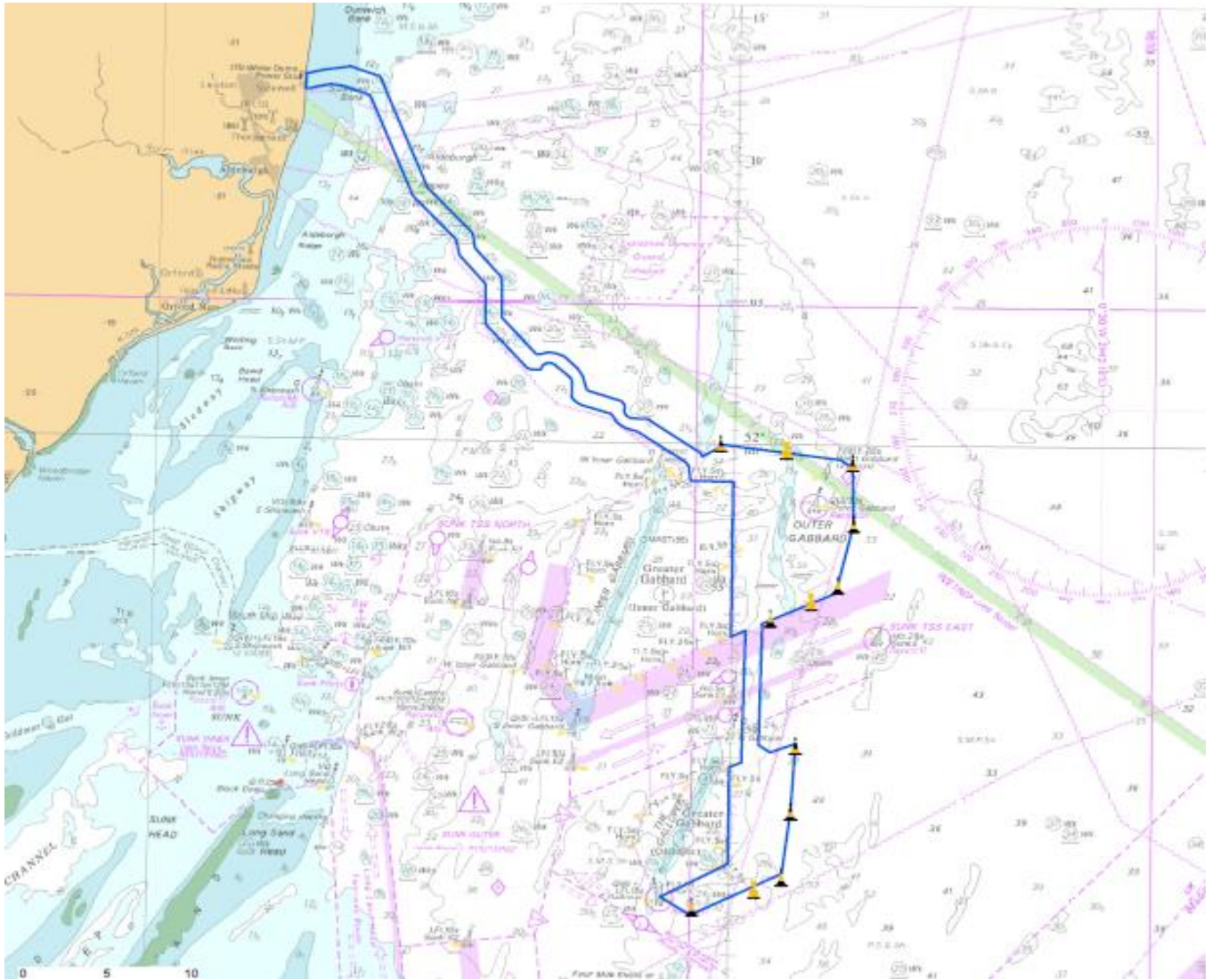
- The vessel will be towing 1 x side scan sonar approximately 50m astern.
- The vessel will have restricted manoeuvrability whilst towing the side scan sonar.
- In addition, the vessel will carry out multibeam operations in the Sunk TSS, with survey lines orientated North – South, perpendicular to the traffic flow.
- The vessel will maintain a navigation watch throughout survey operations. Appropriate signs and shapes will be displayed.
- Mariners are advised to proceed with caution during survey operations.

The vessel can be contacted on VHF Channel 16 throughout for any further information.



FPV Morven – MBFQ6

Contact:07401 719722



Galopper Offshore Wind Farm and Export Cable Corridor Towards The Beach at Sizewell

*** Note ***

The Secretary of State has approved the Application of Safety Zones on the Galopper Wind Farm Project. A Statutory 50m Safety Zone around all structures including the Offshore Sub Station whilst personnel are working on said locations.

Galopper Marine Coordination Centre – Tel: 07596 662 772