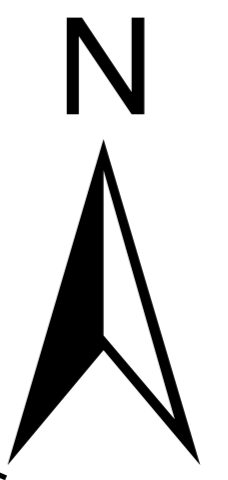




See Sheet 10



Not In Use

Farland North

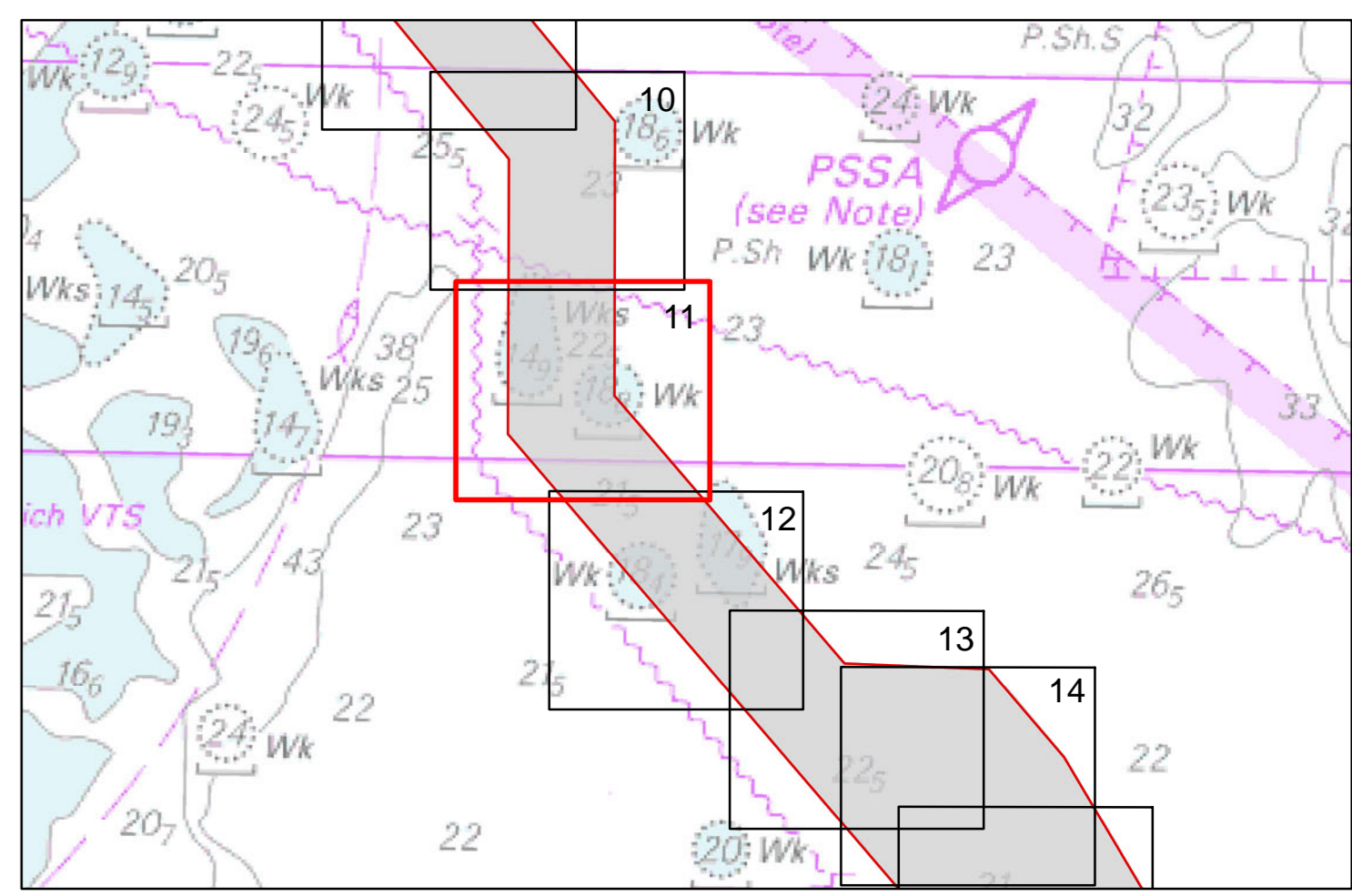
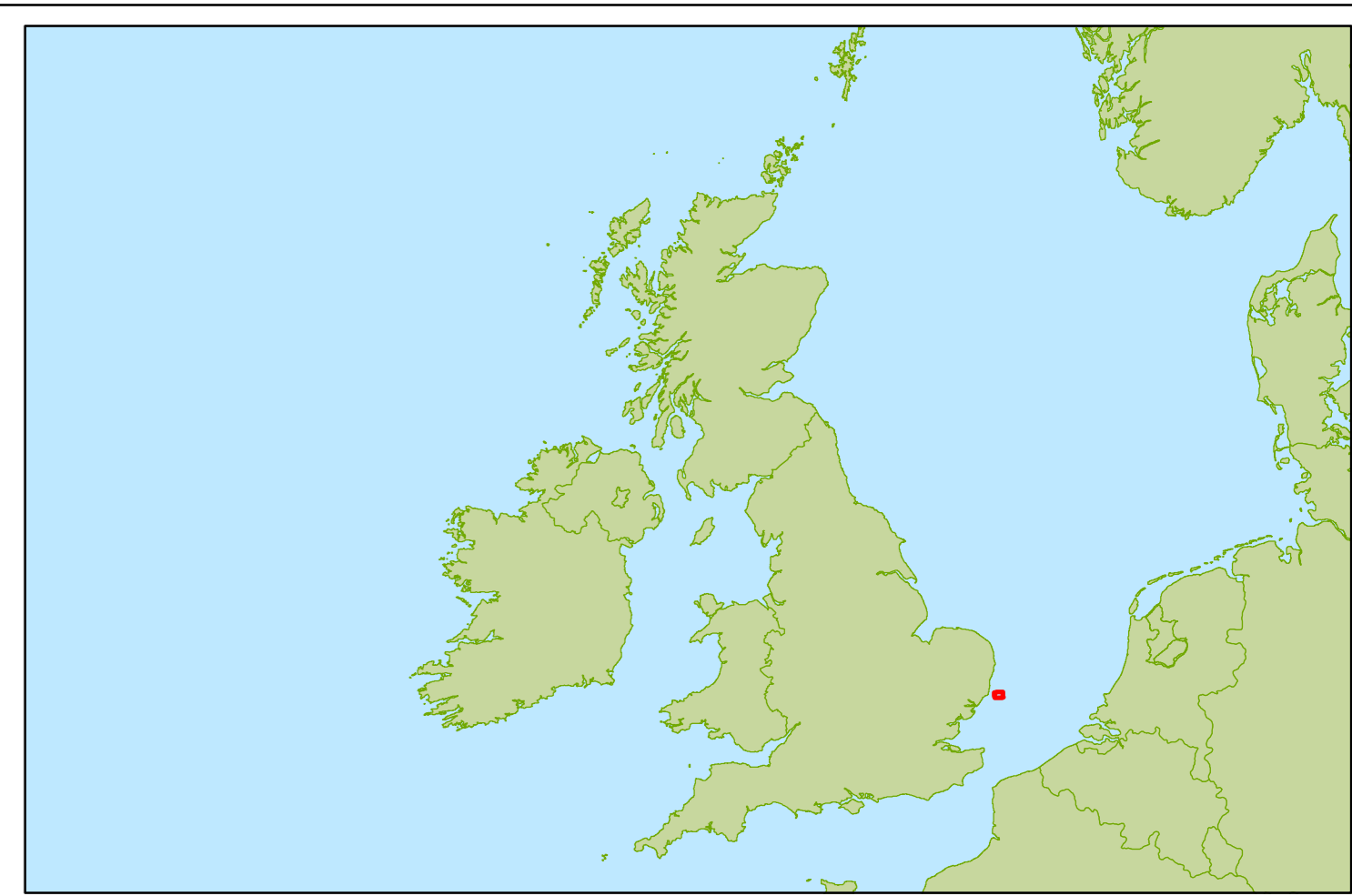
Work No.3A

10

71

21.5

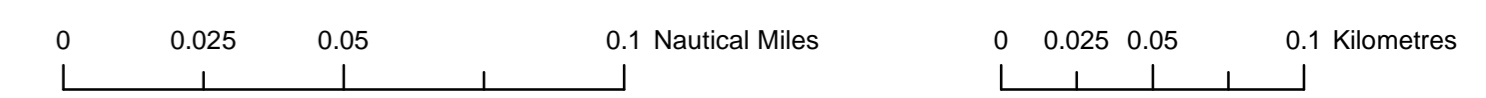
See Sheet 12



- Order Limits
- DCO coordinate points
- 5.9 Depth Sounding Point
- Contour
- Wreck
- Cable

© British Crown and SeaZone Solutions Limited. All rights reserved. Products Licence No. 102009.001.
 © Crown Copyright, 2012. All rights reserved. License No. EMS-EK001-167643

The concepts and information contained in this document are the copyright of SSE Renewables (UK) Ltd and RWE Npower Renewables Ltd. Use or copying of the document in whole or in part without the written permission of SSE Renewables (UK) Ltd and RWE Npower Renewables Ltd constitutes an infringement of copyright. SSE Renewables (UK) and RWE Npower Renewables Ltd does not warrant that this document is definitive nor free of error and does not accept liability for any loss caused or arising from reliance upon information provided herein. Not to be used for navigation purposes.



Galloper Wind Farm	
Drawing Number: C2.4-11	Rev: 1
Works Plan Offshore - Sheet 11	
Regulation: 5(2)(f)	
Date: 08/06/12	Author: Galloper Wind Farm Ltd
Scale: 1:2,500	Page: A0
Datum: WGS1984	Projection: UTM Zone 31N

